



# MBOX

## Automated Smart Lockers



# ABOUT MERIDIAN

Meridian is a fully integrated manufacturer of automated smart lockers, indoor and outdoor kiosks, interactive digital signage and self-service software. As a complete end-to-end self-service innovator, Meridian develops products and services all under one roof, providing greater efficiency, and lean, high-quality results. For nearly two decades, we've helped our partners succeed by designing, engineering, manufacturing and integrating hardware and software solutions from our 13-acre headquarters in North Carolina.

## DESIGN + MANUFACTURING UNDER ONE ROOF

- ❑ Full Scale Production Facilities
- ❑ 13 Acre Manufacturing Campus
- ❑ Global Manufacturing Capabilities
- ❑ ISO 9001:2015 Certified
- ❑ UL Self-Certify Facility
- ❑ Experts in ADA, FCC and HIPAA Compliance



# mBOX SMART LOCKER SYSTEM

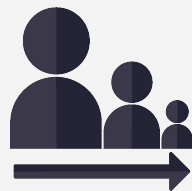
SECURE. SMART. ROBUST. CONNECTED

Meridian's mBOX automated smart lockers provide secure, fully integrated systems to simplify product pickup for unattended rentals, device charging, package drop off and retrieval and much more. Designed with the end-user in mind, electronic locker systems enhance, complement and expand upon the processes and services that they use and rely on across a variety of industries.



## ORDER FREQUENCY

Increases order frequency by streamlining the order and pickup processes.



## DECREASE CONGESTION

Package locker systems decrease congestion and eliminate long lines.



## INCREASE CUSTOMER BASE

Increase customer satisfaction with an efficient solution for storage and/or pickup.



## REDUCE OVERHEAD COSTS

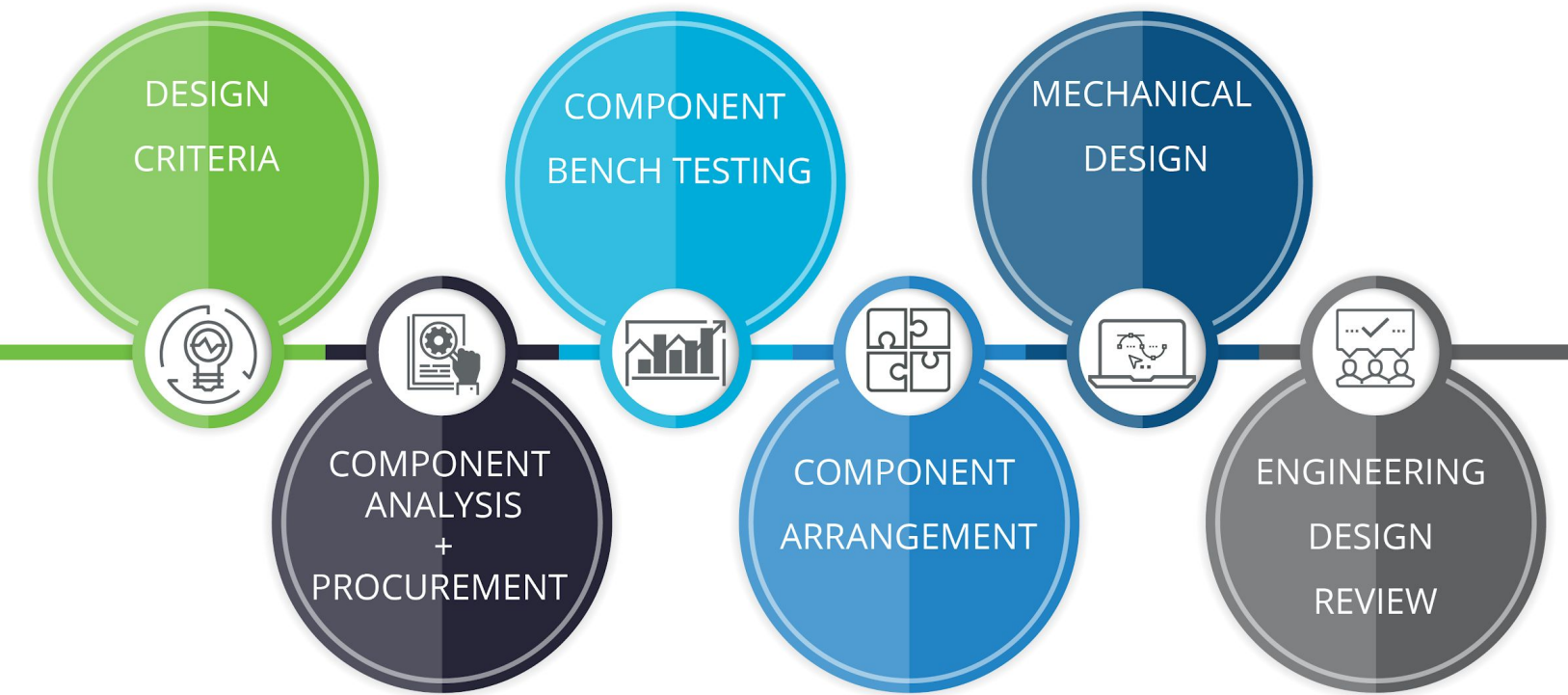
Reduce overhead costs by increasing order output without increasing costs.





# INTELLIGENT + EFFICIENT DESIGN

Meridian's engineering team uses Design Thinking to create locker solutions that help our clients address their market needs. Drawing from their breadth of locker design experience, as well as the aesthetic requirements for each project, our team creates a series of conceptual and environmental renders for review. Meridian's experienced engineers take the desired concept and create a fully functional 3D CAD model, accounting for every screw, weld point, component, bracket and hinge throughout the entire unit.





# AMERICAN ENGINEERED LOCKERS

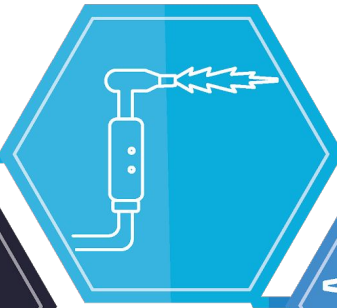
Meridian designs, engineers, fabricates, assembles, deploys and supports self-service solutions from our 13-acre headquarters in North Carolina. Meridian is an ISO 9001:2015 certified company and UL self-certify facility. With all processes from software development to powder coating to quality control completed in house, we proudly offer American-made interactive lockers to a global marketplace. Meridian also has manufacturing capabilities across the globe.



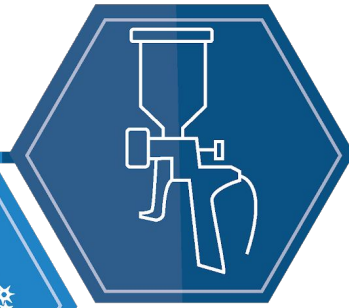
CUTTING



WELDING



PAINTING



BENDING



GRINDING



# mBOX PLUS

COMPUTER-OPERATED LOCKER

mBOX Plus is a computer-operated locker system with full remote administrative functionality.

Designed to integrate with back office systems and hundreds of different components, including input devices, proximity sensors, scanners, payment terminals, printers, and more, mBOX Plus provides a complete package pick-up and drop-off solution.

Flexible in nature from both a hardware and software perspective, operators can utilize Meridian's Locker Software Development Kit (SDK) to create and customize their own software application. The Software Development Kit can also integrate with Meridian's MzeroManage remote management software to allow operators to monitor and manage multiple kiosks in remote locations.

Customers can use the mBOX Plus to both conveniently pay for and pick up their packages while operators can ensure that all lockers are running smoothly, regardless of their location.

## FEATURES INCLUDE

- Durable, Steel Enclosure
- Easy Open Lockers
- Durable Powder Coat
- Tamper Resistant Locks
- Modular, Future Proof Design

## AVAILABLE PERIPHERALS

- IP65 Rugged Keyboard
- Proximity Sensor
- Optical 1D/2D Scanner
- EMV2 Payment Terminal
- Thermal Receipt Printer

## DISPLAY SIZE\*

- 15-Inch Touch Standard
- Additional Sizes Available

*\*Compatible with multiple screen manufacturers.*

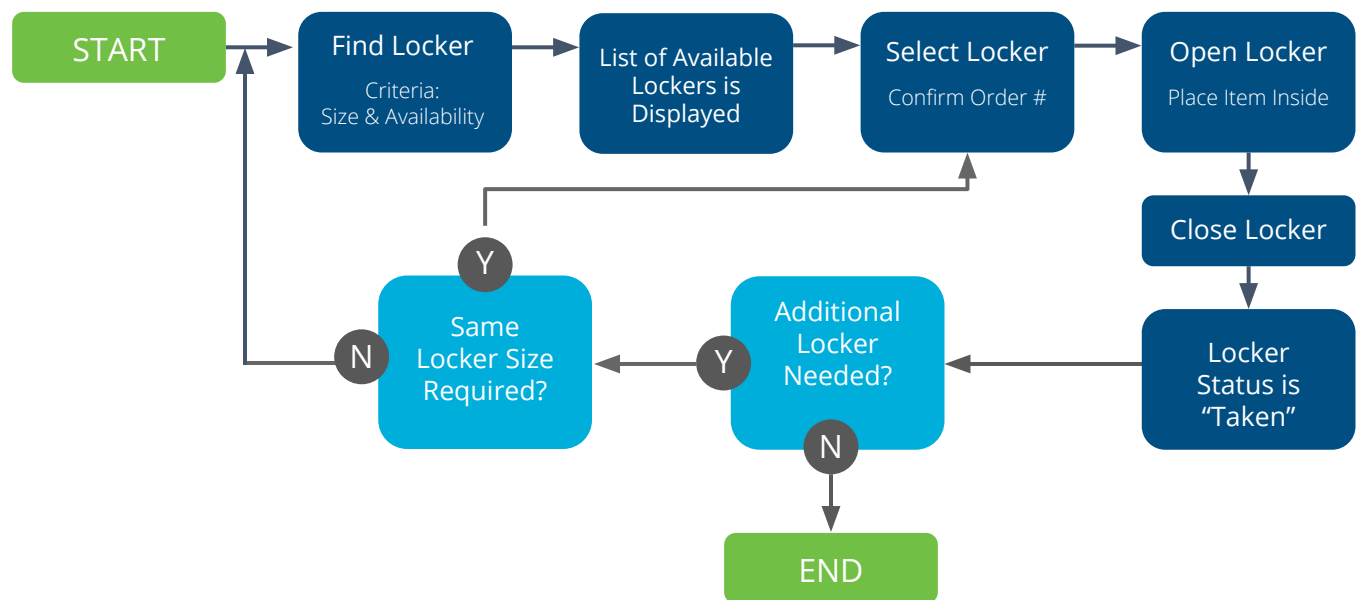


# mBOX PLUS LOCKER SOFTWARE

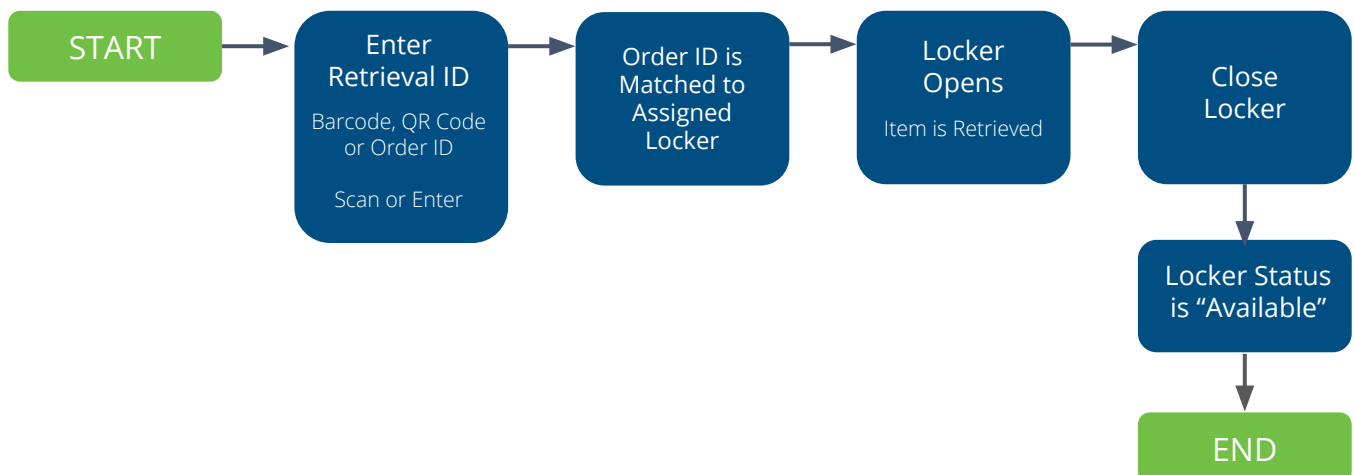
## ORDERING PROCESS DIAGRAMS | COMPUTER-MANAGED SMART LOCKER

The “fulfillment” and “retrieval” processes outlined below are provided as a representation of order flow and can be customized to meet your organization's specific needs through the Mzero Locker SDK. Designed to integrate with back office systems and hundreds of different components, including input devices, proximity sensors, scanners, payment terminals, printers, and more, mBOX Plus provides a completely customizable package pick-up and drop-off solution.

### ORDER FULFILLMENT



### ORDER RETRIEVAL





# CUSTOM SOFTWARE (SDK)

## SMART LOCKER SOFTWARE DEVELOPMENT KIT\*

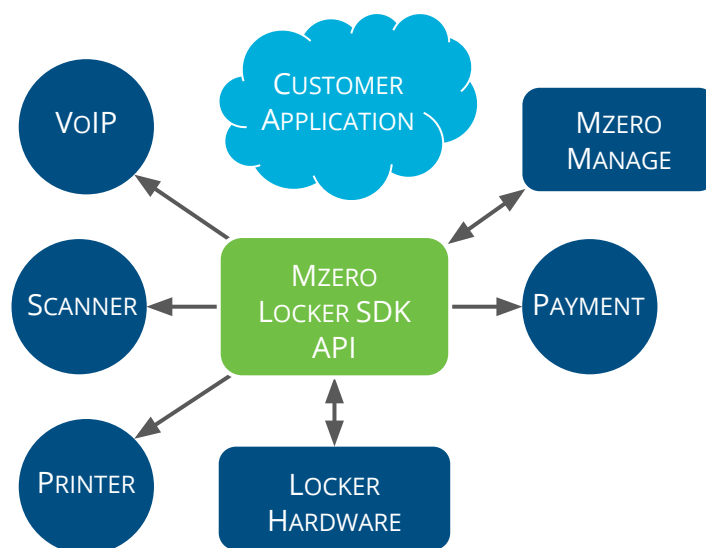
When launching their mBOX solution, customers are able to create their own application from Meridian's Software Development Kit (SDK), MzeroCreate. MzeroCreate provides the programming interface integration that allows full customization of the locker solution platform. It also has the capability to integrate the locker hardware itself—printers, scanners, VoIP, additional digital signage, and payment acceptors of all kinds including cash, credit, debit, check, and mobile—into the locker system.



Most of the heavy lifting is done for you. You simply plug (the SDK) into an HTML-based front end with MzeroCreate or add it to your website.

- PAUL BURDEN

*DIRECTOR OF SOFTWARE*



## FUNCTIONALITY

The Mzero Locker SDK utilizes three simple commands as the basis of the application: 'Status,' 'Store,' and 'Retrieve.'

- The 'Status' command allows the operator to assess the inventory of all the lockers.
- The 'Store' command scans the tracking number and opens an available door so that an operator can place a package inside.
- The 'Retrieve' command enables the customer to scan a delivery notice which will open the locker door associated with their order.

Meridian's mBOX software solution currently has the capability to support units with up to 70 individual lockers per PC.

## mzero<sup>o</sup> lockerSDK

*\*MzeroLockerSDK only compatible with mBOX Plus locker systems.*

Copyright 2019 © Meridian



# SDK INTEGRATION OPTIONS

## SMART LOCKER SOFTWARE DEVELOPMENT KIT\*

The Mzero Locker SDK allows for rapid development of smart locker applications and integration with hundreds of hardware components. Integration points already built into the SDK include:

Category	Component
Inputs	Touch Screen
Inputs	Keyboard
Inputs	Voice Prompts
Inputs	Headphone Jack
Inputs	Tactile Navigation
Inputs	Scanner
Communication	Help Calls (VOIP)
Communication	Optional Video Call
Identity Scanning	Driver's License
Identity Scanning	HID Access Card
Identity Scanning	Loyalty Cards
Security	Camera
Security	Door Sensors
Security	Intrusion Sensors
Security	Tilt Sensors
Security	Transaction Receipts
Security	Pickup Receipts

“[The SDK] has the capability to integrate the locker hardware itself—printers, scanners, VoIP, and payment acceptors of all kinds including cash, credit, debit, check, and mobile — into the locker system.



## mzero° lockerSDK

*\*MzeroLockerSDK only compatible with mBOX Plus locker systems.*

Copyright 2019 © Meridian

# mzero°manage

## REMOTE MONITORING

MzeroManage is Meridian's proprietary remote monitoring software, designed to enable locker administrators to monitor and manage multiple locker deployments from remote locations.

MzeroManage aggregates all the inventory of the smart locker system into a single database in real time, giving administrators the peace of mind that everything is running smoothly, even when they're offsite. The heartbeat confirms that your system is always running and healthy.

### Available Alerts

- Locker Status - Reports the status of all lockers (Open, Closed, Full, Empty, Assigned, Unassigned).
- Door Open Alerts - Reports if a locker door is left open after the transaction is completed.
- Abandoned Article Alert - Reports if an item has been left in a locker beyond a specific time frame.
- Usage Reports - Details the interactions that have been made with the smart locker system.
- MzeroManage also includes a wide variety of additional alerts to keep administrators informed.

### Remote Triggering (Over Secure Network)

- Door Open Command - Administrators can remotely open locker doors over the secure MzeroManage network.
- Real Time Status Confirmations - Administrators can remotely view the status of all locker pick-ups, drop-offs and access, as well as overall state of health.

Copyright 2019 © Meridian



# mBOX LITE

## LOCAL BOARD-OPERATED LOCKER



mBOX Lite is a local board-operated locker system, providing a simple and seamless user experience.

Utilizing the board and scanner for programming and interactions, the operator assigns a locker by scanning a barcode or entering an order number, and either places the order inside the locker, schedules a drop-off, or assigns the number to that individual for long term use of the locker box. The customer then scans their barcode or enters their number upon arriving at the mBOX, prompting the assigned locker to automatically open.

Administrators can utilize specific administrator codes to access lockers, reset locker codes and service the unit.

### AVAILABLE PERIPHERALS

- Proximity Sensor
- Optical 1D/2D Scanner

### DISPLAY

The mBOX Lite utilizes an 8" interactive LCD touch screen.

### FEATURES INCLUDE

Durable, Steel Enclosure  
Easy Open Lockers  
Antimicrobial Powder Coat  
Tamper Resistant Locks  
Modular, Future Proof Design



Copyright 2019 © Meridian

mBOX



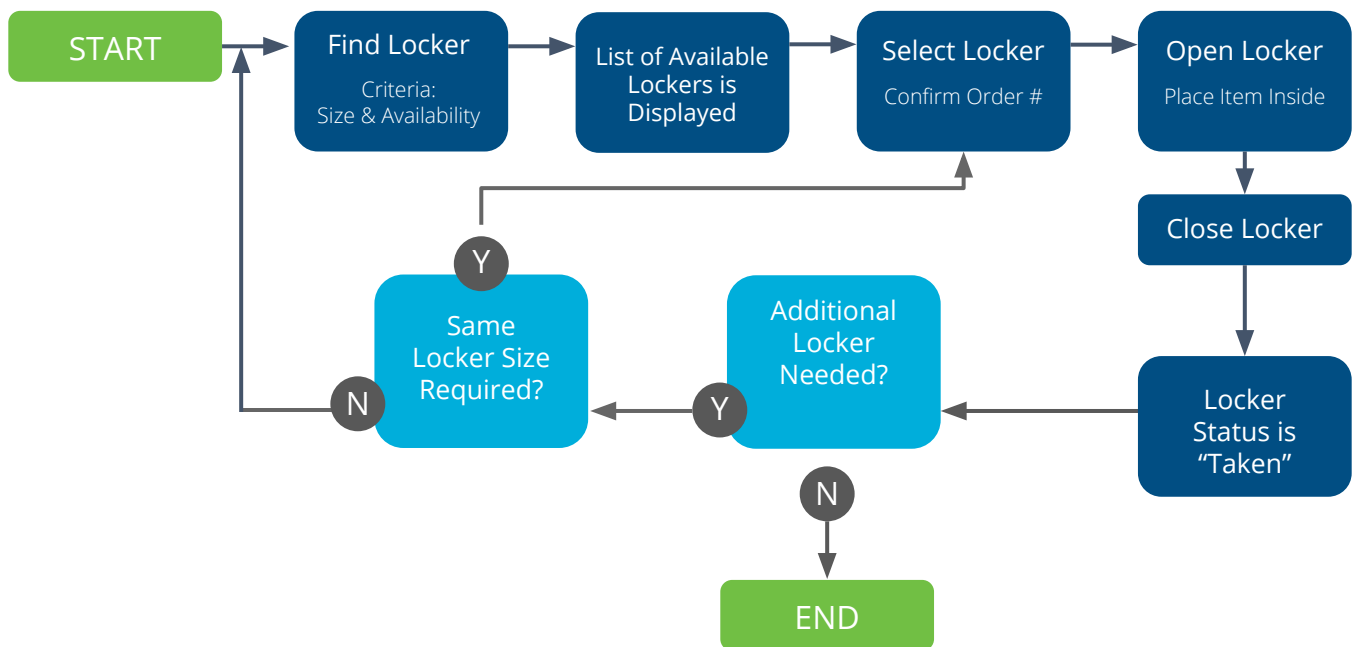


# mBOX LITE SOFTWARE

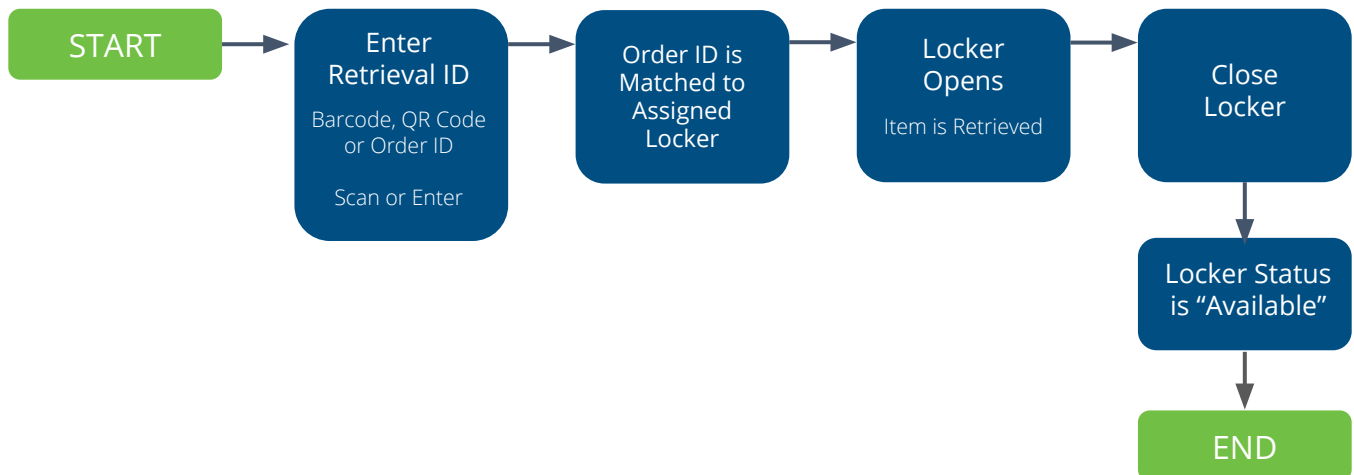
## ORDERING PROCESS DIAGRAMS | LOCAL BOARD LEVEL SYSTEM

The “fulfillment” and “retrieval” processes outlined below cannot be modified on mBOX Lite smart lockers. The computer-managed mBOX Plus offers additional customization and flexibility.

### ORDER FULFILLMENT



### ORDER RETRIEVAL





# MODULAR LOCKER SYSTEMS

## AVAILABLE LOCKER DOOR SIZES

### SMALL DOORS

The “small” locker compartments measure approximately 17.5” W x 4.25” H x 24” D. The locker will always include a medium (or larger, if specified) door at the top of the chassis to ensure accessible reach.



### MEDIUM DOORS

The “medium” locker compartments measure approximately 17.5” W x 9” H x 24” D.





# MODULAR LOCKER SYSTEMS

## AVAILABLE LOCKER DOOR SIZES

### LARGE DOORS

The “large” locker compartments measure approximately 17.5” W x 18” H x 24” D.



### EXTRA LARGE DOORS

The “extra large” locker compartments measure approximately 17.5” W x 54.5” H x 24” D.



# MODULAR LOCKER SYSTEMS

## AVAILABLE LOCKER DOOR SIZES

### DOOR SIZES AND CONFIGURATIONS

Small, medium and large locker door sets can be combined to create a complete locker solution that meets the needs of any organization. Sizes shown below are simply representative of available options. Full customization of modules is available.

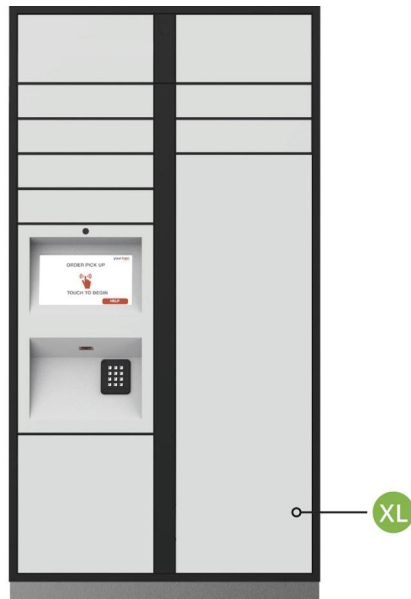
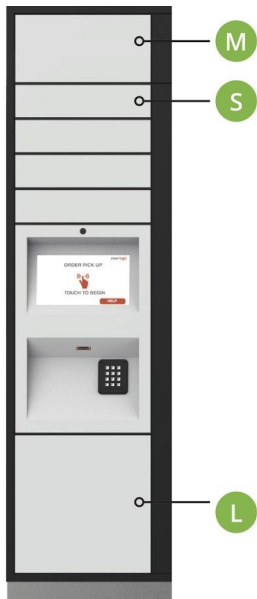


DOOR SIZE	# OF SLOTS	MAX DOORS ON SOLO	MAX DOORS ON DUO	MAX DOORS ON TRIO	MAX DOORS ON QUAD
S	1	8 S + 1 M	22 S + 2 M	36 S + 3 M	50 S + 4 M
M	2	5 M	13 M	21 M	29 M
L	4	1 M + 2 L	1 M + 6 L	1 M + 10 L	1 M + 14 L
XL	12	---	1 M + 3 L + 1 XL	1 M + 4 L + 2 XL	1 M + 5 L + 3 XL

$$\text{S} \times 2 = \text{M}$$

$$\text{M} \times 2 = \text{L}$$

$$\text{L} \times 3 = \text{XL}$$



#### NOTES:

Top doors must always be medium or large, to accommodate reach height restrictions. Sixteen (16) total vertical slots per column.

# LOCKER CUSTOMIZATION

## AVAILABLE CUSTOMIZATIONS

### STANDARD POWDER COAT COLORS

EPA Approved

No Solvents or VOCs

Fade Resistant

Durable

Easily Cleaned

Anti-Microbial Available

*\*Additional colors available.*

*Small batch custom paint  
fees may apply.*



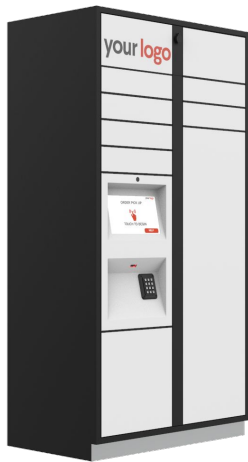
Raven Black  
Frame and Shelves



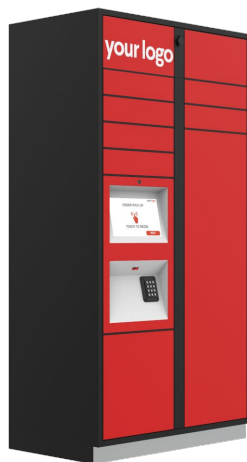
Whisper White  
Locker Doors



### GRAPHIC CUSTOMIZATION



Partial Wrap | Logo Only



Half Wrap | All Locker Doors



Full Wrap | Locker Doors & Chassis

Lexan Lamination | EPA Approved | No Solvents or VOCs | Fade Resistant Ink | Durable and Easily Cleaned

*Custom printed by the Meridian print shop at our headquarters in Aberdeen, NC.*

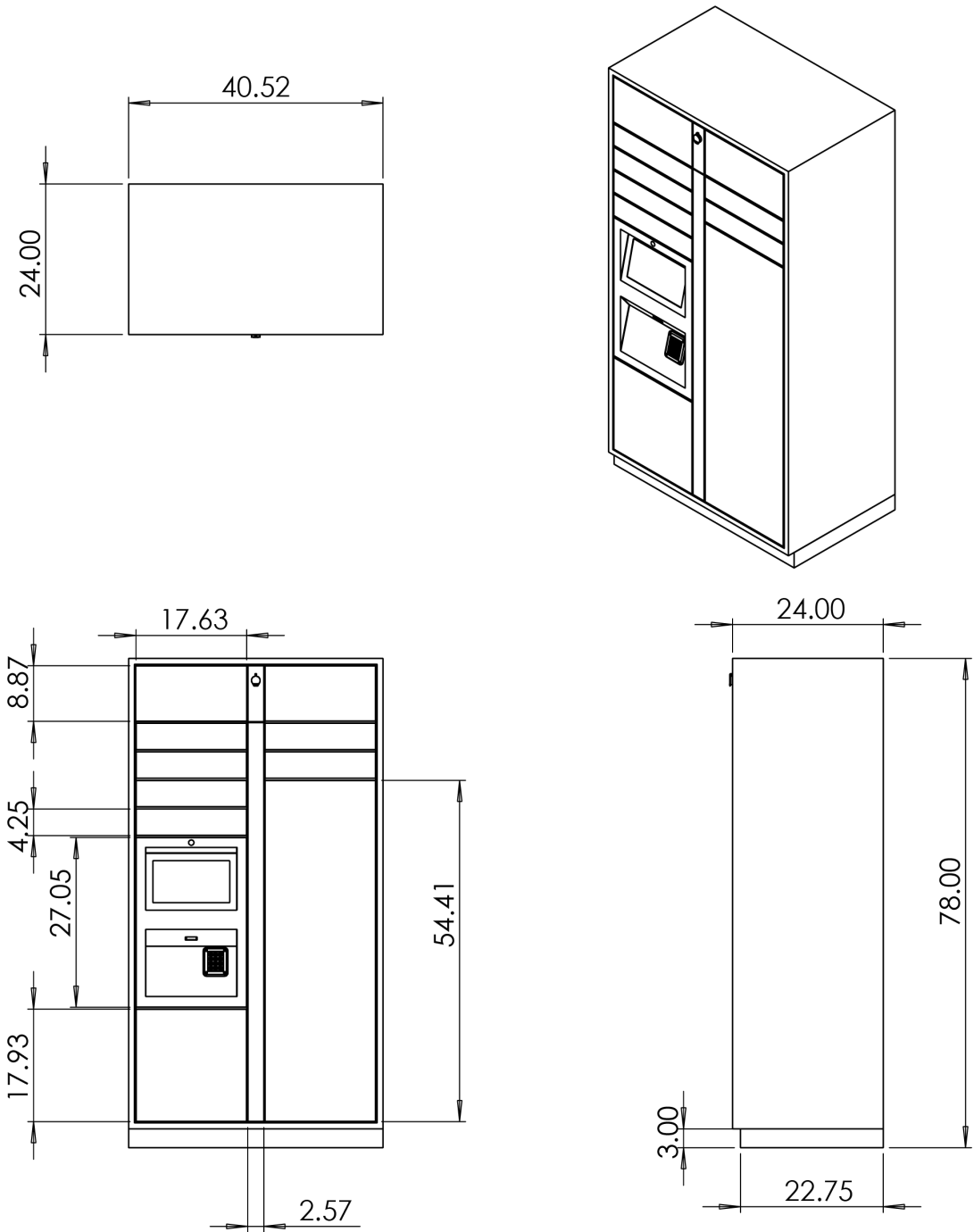


# MODULAR LOCKER SYSTEMS

## STANDARD DIMENSIONS

### STANDARD “DUO” LOCKER DIMENSIONS

Dimensions shown on this page are for a standard locker with indoor control panel. Each additional expansion locker will add 40.5” to the overall width of the unit. Depth and height remain the same for all configurations.



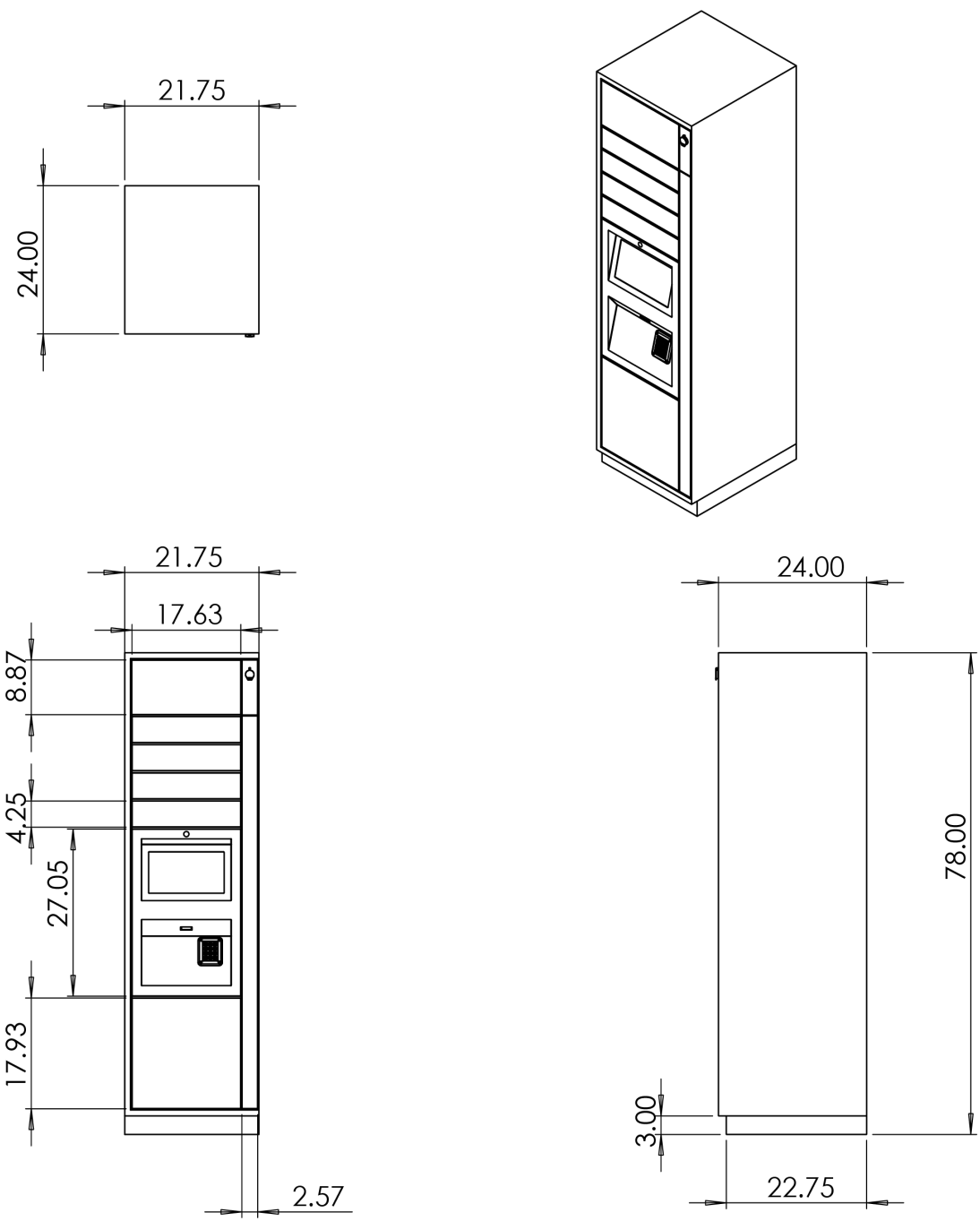
*Exact dimensions subject to change. Final drawings will always be provided to customer for approval prior to fabrication.*

# MODULAR LOCKER SYSTEMS

## STANDARD DIMENSIONS

### STANDARD “SOLO” LOCKER DIMENSIONS

Dimensions shown on this page are for a standard locker with indoor control panel. Each additional expansion locker will add 40.5” to the overall width of the unit. Depth and height remain the same for all configurations.



Exact dimensions subject to change. Final drawings will always be provided to customer for approval prior to fabrication.



MERIDIANKIOSKS.COM

866-454-6757

Copyright 2019 © Meridian